

[Cat. No.] Please refer to the **Ordering Information**

Introduction

All BIONEER DNA Ladders and Lambda DNA Markers are specially designed for sizing and approximate quantification of a wide range of double-stranded DNA sizes. These products are ready-to-use, containing a storage buffer with two tracking dyes, Bromophenol Blue and Xylene Cyanol FF, with the 10 bp DNA ladder also having Orange G for an easy visualization, which can be applied directly onto an agarose gel.

Specifications

	D-1010	D-1020	D-1030	D-1035	D-1040	D-1050	D-1060	D-1070
Size Range (bp)	10-100	25-2,000	100-2,000	100-10,200	500-10,200	125-23,130	3,530-21,226	125-21,226
Concentration	522 ng/μl	150 ng/μl	100 ng/μl	80 ng/μl	100 ng/μl	200 ng/μl	200 ng/μl	200 ng/μl
Recommended Loading Volume	1.5-2 μl/5 mm lane	2 μl/5 mm lane	2 μl/5 mm lane	4 μl/5 mm lane	2 μl/5 mm lane	1-2 μl/5 mm lane	1-2 μl/5 mm lane	1-2 μl/5 mm lane
Recommended Buffer Condition	0.5X TBE buffer	0.5X TBE buffer	0.5X TBE buffer	0.5X TBE buffer	0.5X TBE buffer	0.5X TAE buffer	0.5X TAE buffer	0.5X TAE buffer
Number of Bands	10	17	13	19	10	8	6	13
Typical Loading Number of Lanes	50-66	250	250	125	250	250-500	250-500	250-500
Volume	100 μl	500 μl	500 μl	500 μl	500 μl	500 μl	500 μl	500 μl
Ready-to-use	Yes	Yes	Yes	Yes	Yes	Yes	Yes	Yes

* **Note:** For research use only. Not for use in diagnostic or therapeutic procedures.

Storage Buffer

- All BIONEER DNA Ladders and Lambda DNA Markers are supplied in 10 mM Tris-HCl (pH 8.0), 1 mM EDTA, 2.5% Ficoll, 0.005% Bromophenol Blue, and 0.005% Xylene Cyanol FF, except for 10 bp DNA Ladder.
- The 10 bp DNA Ladder is supplied in 10 mM Tris-HCl (pH 8.0), 1 mM EDTA, 5% Ficoll, 0.012% Bromophenol Blue, 0.01% Xylene Cyanol FF, and 0.08% Orange G.

Storage

Store all BIONEER DNA Ladders and Lambda DNA Markers at -20°C.

Precautions

- Do not heat before loading.
- Repeated freezing and thawing should be avoided.
- Do not reuse TAE and TBE buffer several times.

Online Resources



Korean



English

Visit our **product page** for additional information and protocols.

Ordering Information

Description	Cat. No.
10 bp DNA Ladder	D-1010
25/100 bp Mixed DNA Ladder	D-1020
100 bp DNA Ladder	D-1030
100 bp Plus DNA Ladder	D-1035
1 kb DNA Ladder	D-1040
Lambda DNA/ <i>Hind</i> III Marker	D-1050
Lambda DNA/ <i>EcoR</i> I Marker	D-1060
Lambda DNA/ <i>EcoR</i> I+ <i>Hind</i> III Marker	D-1070

Notice

BIONEER corporation reserves the right to make corrections, modifications, improvements, and other changes to its products, services, specifications, or product descriptions at any time without notice.

Explanation of Symbols



Batch Code



Catalog Number



Caution



Consult Instructions For Use



Contains Sufficient for <n> tests



Research Use Only

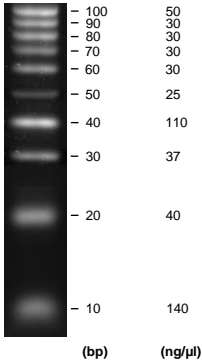


Temperature Limitation



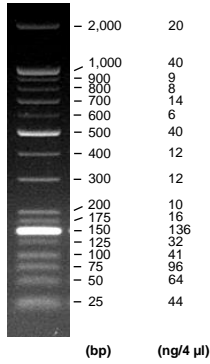
Use-by Date

Size Description



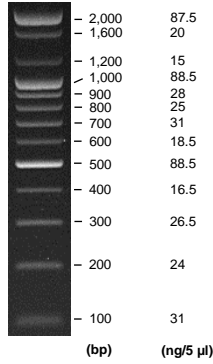
4.0% TBE agarose gel stained with Ethidium Bromide

[Cat. No. D-1010]
10 bp DNA Ladder



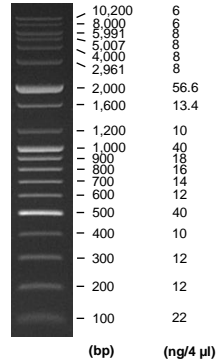
2.0% TBE agarose gel stained with Ethidium Bromide

[Cat. No. D-1020]
25/100 bp Mixed DNA Ladder



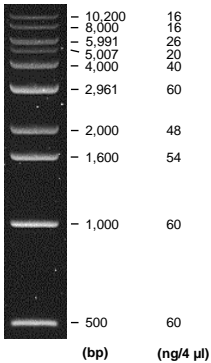
1.5% TBE agarose gel stained with Ethidium Bromide

[Cat. No. D-1030]
100 bp DNA Ladder



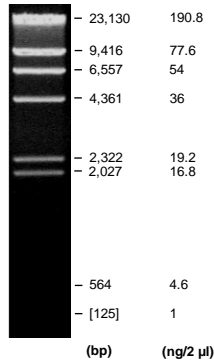
1.0% TBE agarose gel stained with Ethidium Bromide

[Cat. No. D-1035]
100 bp Plus DNA Ladder



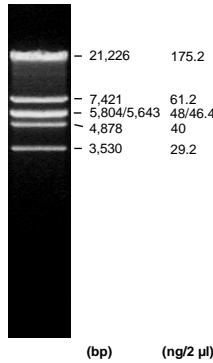
1.0% TBE agarose gel stained with Ethidium Bromide

[Cat. No. D-1040]
1 kb DNA Ladder



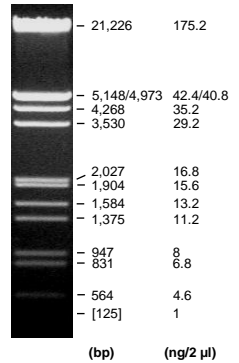
0.7% TAE agarose gel stained with Ethidium Bromide

[Cat. No. D-1050]
Lambda DNA/Hind III Markers



0.7% TAE agarose gel stained with Ethidium Bromide

[Cat. No. D-1060]
Lambda DNA/EcoR I Markers



0.7% TAE agarose gel stained with Ethidium Bromide

[Cat. No. D-1070]
Lambda DNA/EcoR I+Hind III Markers