

# NEW PRODUCT

## AccuLadder™ 3-color Prestained Protein size marker

AccuLadder™ 3-color Prestained Protein size marker can be used to estimate the sizes of proteins during protein electrophoresis. This product is composed of 12 different types of proteins (11-245 kDa). There are three reference bands covalently coupled with different bands: one with a blue dye, another with a green, and the other with a red dye. With this, the bands can be easily distinguished.

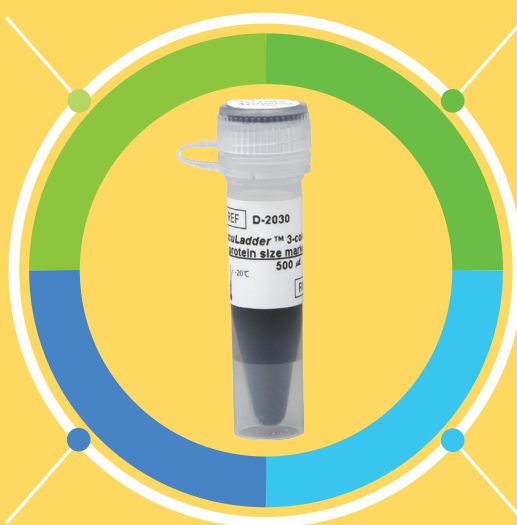
### Features and Benefits

#### Broad range

Identify proteins between 11-245 kDa when used with Tris-Glycine-SDS running buffer

#### Ready-to-use

Loading buffer already included; boiling or adding buffer is not required.



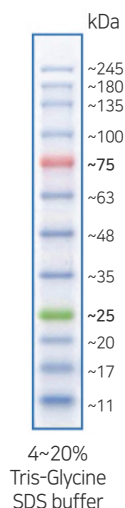
#### Easy identification

Contains reference bands coupled with a green and a red dye.

#### Reproducible

Give reproducible results with uniform quality for each batches by manufacturing them under the ISO 9001 quality system.

### Molecular Weight images



For more information,  
please visit  
the bioneer website.

### Specifications

Molecular weight	11-245 kDa
Number of bands	12
Concentration	0.1-0.4 mg/ml
Loading volume	5 µl/well (Mini-gel; 10x8 (cm <sup>2</sup> ), 0.75 or 1.0 mm thick)
Storage temperature	-20 °C

**BIONEER**  
Innovation • Value • Discovery