

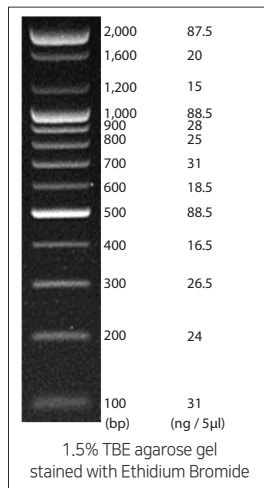
# DNA Ladders and Markers

---

Convenient,  
Ready-to-load,  
Bright and Sharp

- Designed for size determination and approximate quantification of DNA fragments
- Ready-to-load, no need to add loading buffer
- Available in a wide range of fragment sizes
- Bright and sharp bands with brighter reference

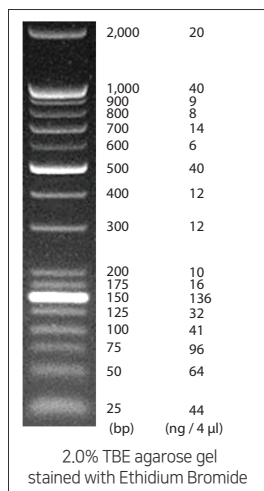
## 100 bp DNA Ladder



- Designed to determine the size of double stranded DNA from 100 to 2,000 base pairs.
- Consists of 13 bands. 10 double stranded DNA fragments ranging in size from 100 to 1,000 bp in 100 bp increments and 3 additional fragments at 1,200, 1,600, and 2,000 bp.
- Reference bands at 500, 1,000 and 2,000 bp are brighter than other bands for easier identification.

Concentration	100 ng/µl
Recommended Loading	2.0 µl / 5 mm lane width
Typical Number of Lanes	250 (5 mm lane width)
Size Range (bp)	100 - 2,000
Number of Bands	13

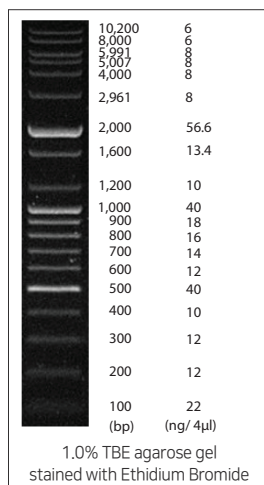
## 25/100 bp Mixed DNA Ladder



- Designed to determine the size of double stranded DNA from 25 to 2,000 base pairs.
- Consists of 17 bands. 8 double stranded DNA fragments ranging in size from 25 to 200 bp in 25 bp increments, 8 fragments from 300 to 1,000 bp in 100 bp increments, and an additional fragment at 2,000 bp.
- Reference bands at 150, 500, 1,000 and 2,000 bp are brighter than other bands for easier identification.

Concentration	150 ng/µl
Recommended Loading	2.0 µl / 5 mm lane width
Typical Number of Lanes	250 (5 mm lane width)
Size Range (bp)	25 - 2,000
Number of Bands	17

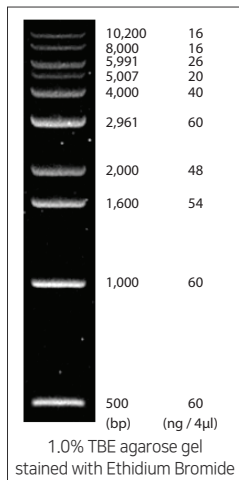
## 100 bp Plus DNA Ladder



- Designed to determine the size of double stranded DNA from 100 to 10,200 base pairs.
- Consists of 19 bands. 10 double stranded DNA fragments ranging in size from 100 to 1,000 bp in 100 bp increments and 9 fragments from 1,200 to 10,200 bp.
- Reference bands at 500, 1,000 and 2,000 bp are brighter than other bands for easier identification.

Concentration	80 ng/µl
Recommended Loading	4.0 µl / 5 mm lane width
Typical Number of Lanes	125 (5 mm lane width)
Size Range (bp)	100 - 10,200
Number of Bands	19

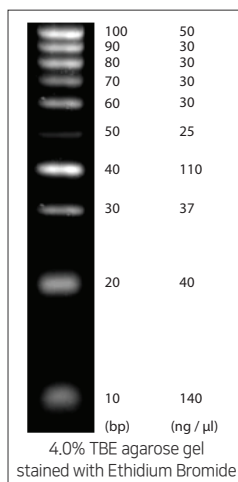
## 1 kb DNA Ladder



- Designed to determine the size of double stranded DNA ranging from 500 to 10,200 base pairs.
- Consist of 10 double stranded DNA fragments ranging in size from 500 to 10,200 bp.

Concentration	100 ng/μl
Recommended Loading	2.0 μl / 5 mm lane width
Typical Number of Lanes	250 (5 mm lane width)
Size Range (bp)	500 - 10,200
Number of Bands	10

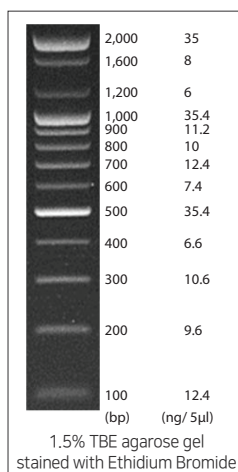
## 10 bp DNA Ladder



- Designed to determine the size of double stranded DNA from 10 to 100 base pairs.
- Consists of 9 double stranded DNA fragments ranging in size from 10 to 100 bp in 10 bp increments.
- A reference band at 40 bp is brighter than other bands for easier identification.

Concentration	522 ng/μl
Recommended Loading	1.5 - 2.0 μl / 5 mm lane width
Typical Number of Lanes	50 - 66 (5 mm lane width)
Size Range (bp)	10 - 100
Number of Bands	10

## AccuLadder™ 100 bp DNA Size Marker

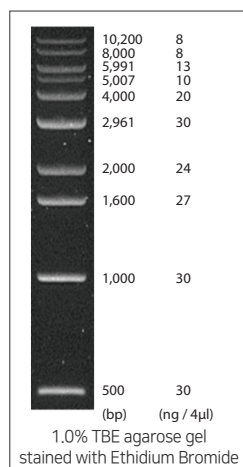


### High resolution - brighter and sharper

- Designed to determine the size of double stranded DNA from 100 to 2,000 base pairs.
- *AccuLadder™* is sharper and brighter than our standard 100 bp ladder.
- Consists of 13 bands. 10 double stranded DNA fragments ranging in size from 100 to 1,000 bp in 100 bp increments and 3 additional fragments at 1,200, 1600, and 2,000 bp.
- Reference bands at 500, 1,000 and 2,000 bp are brighter than other bands for easier identification.

Concentration	40 ng/μl
Recommended Loading	5 μl / 5 mm lane width
Typical Number of Lanes	160 (5 mm lane width)
Size Range (bp)	100 - 2,000
Number of Bands	13

## AccuLadder™ 1 kb DNA Size Marker

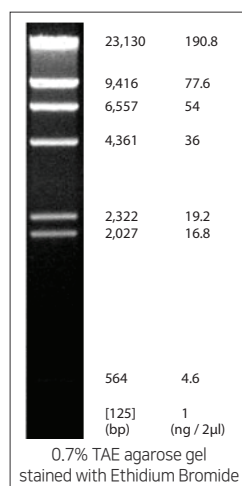


### High resolution - brighter and sharper

- Designed to determine the size of double stranded DNA ranging from 500 to 10, 200 base pairs.
- AccuLadder™ is sharper and brighter than our standard 1 kb ladder.
- Consist of 10 double stranded DNA fragments ranging in size from 500 to 10,200 bp.

Concentration	50 ng/µl
Recommended Loading	5.0 µl / 5 mm lane width
Typical Number of Lanes	200 (5 mm lane width)
Size Range (bp)	500 - 10,200
Number of Bands	10

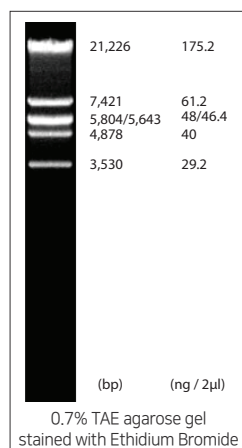
## Lambda DNA/*Hind* III Markers



- Created by digesting lambda DNA with *Hind* III.
- Consist of 8 double stranded DNA fragments ranging in size from 125 to 23,130 base pairs.

Concentration	200 ng/µl
Recommended Loading	1 - 2 µl / 5 mm lane width
Typical Number of Lanes	250 - 500 (5 mm lane width)
Size Range (bp)	125 - 23,130
Number of Bands	8

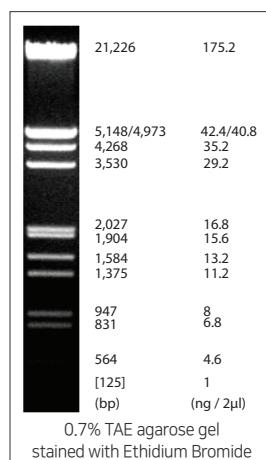
## Lambda DNA/*Eco*R I Markers



- Created by digesting lambda DNA with *Eco*R I.
- Consist of 6 double strand DNA fragments ranging in size from 3,530 to 21,226 base pairs.

Concentration	200 ng/µl
Recommended Loading	1 - 2 µl / 5 mm lane width
Typical Number of Lanes	250 - 500 (5 mm lane width)
Size Range (bp)	3,530 - 21,226
Number of Bands	6

## Lambda DNA/*EcoR* I + *Hind* III Markers



- Created by digesting lambda DNA with *EcoR* I and *Hind* III.
- Consist of 13 double strand DNA fragments ranging in size from 125 to 21,226 base pairs.

Concentration	200 ng/µl
Recommended Loading	1-2 µl / 5 mm lane width
Typical Number of Lanes	250-500 (5 mm lane width)
Size Range (bp)	125 - 21,226
Number of Bands	13

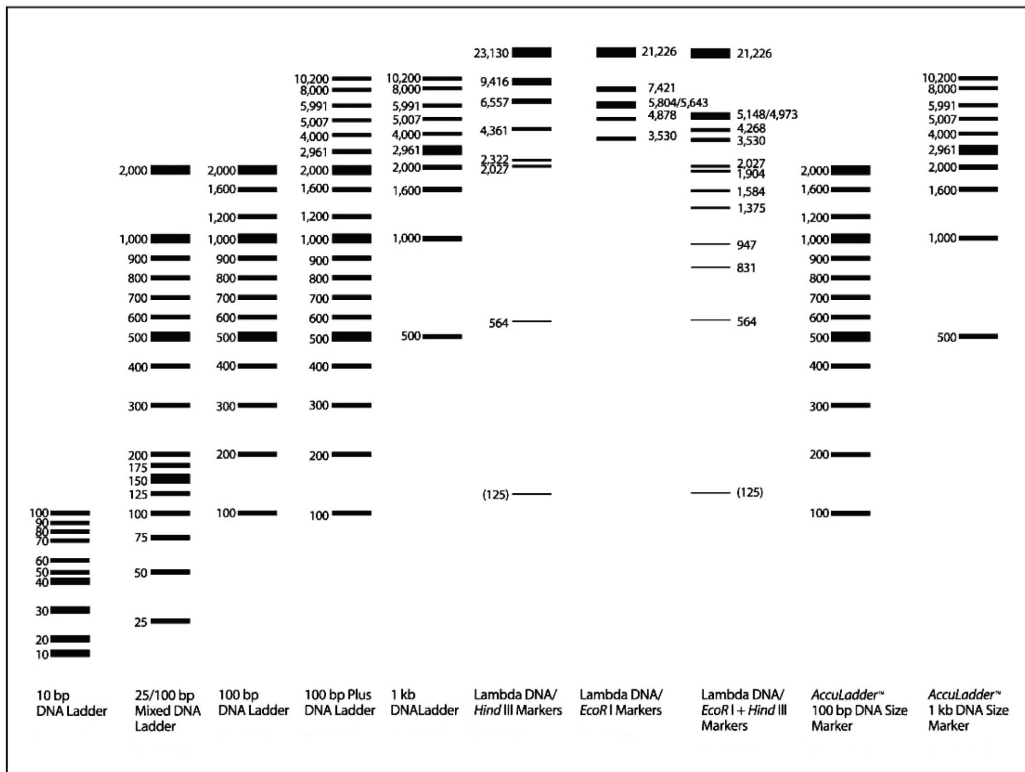
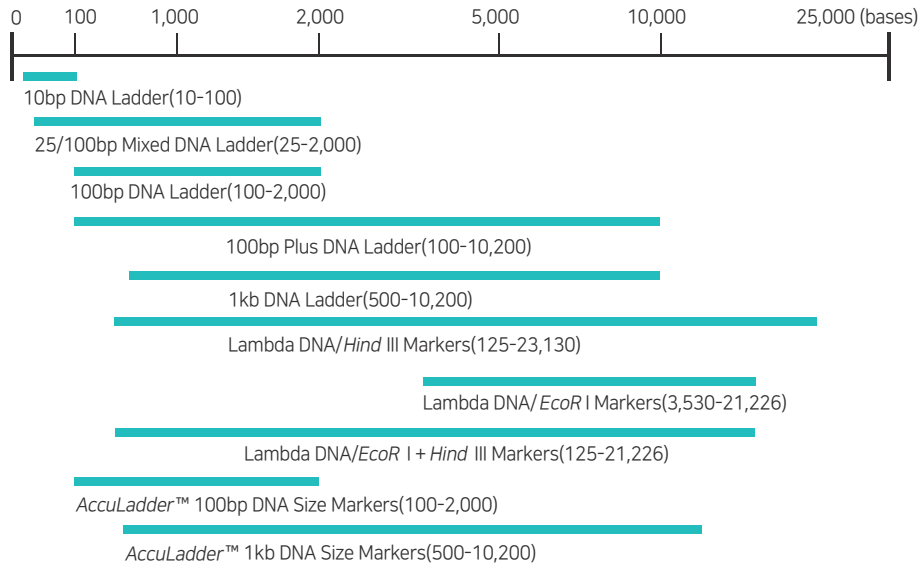
## Notice to Purchaser

ALL PRODUCTS: FOR RESEARCH USE ONLY. NOT FOR USE IN DIAGNOSTIC PROCEDURES.

## Ordering Information

Cat. No.	Product Name	Details
<b>Ladders</b>		
D-1030	100 bp DNA Ladder	500 µl (100 ng/µl)
D-1032	100 bp DNA Ladder (-dye)	500 µl (120 ng/µl)
D-1020	25/100 bp Mixed DNA Ladder	500 µl (150 ng/µl)
D-1022	25/100 bp Mixed DNA Ladder (-dye)	500 µl (180 ng/µl)
D-1035	100 bp Plus DNA Ladder	500 µl (80 ng/µl)
D-1037	100 bp Plus DNA Ladder (-dye)	500 µl (96 ng/µl)
D-1040	1 kb DNA Ladder	500 µl (100 ng/µl)
D-1042	1 kb DNA Ladder (-dye)	500 µl (120 ng/µl)
D-1010	10 bp DNA Ladder	100 µl (522 ng/µl)
<b>AccuLadders™</b>		
D-1030-1	AccuLadder™ 100 bp DNA Size Marker	640 µl (40 ng/µl)
D-1040-1	AccuLadder™ 1 kb DNA Size Marker	1,000 µl (50 ng/µl)
<b>Markers</b>		
D-1050	Lambda DNA/ <i>Hind</i> III Markers	500 µl (200 ng/µl)
D-1060	Lambda DNA/ <i>EcoR</i> I Markers	500 µl (200 ng/µl)
D-1070	Lambda DNA/ <i>EcoR</i> I Markers + <i>Hind</i> III Markers	500 µl (200 ng/µl)

# DNA Ladders and Markers Selection Chart



## Contact Us

**Bioneer Corporation**  
 8-11 Munpyeongseo-ro, Daedeok-gu,  
 Daejeon 306-220 Republic of Korea  
 Tel: Korea)1588-9788  
 International ) +82-42-930-8777  
 Fax: +82-42-930-8688  
 E-mail: sales@bioneer.com

**Bioneer Inc.**  
 155 Filbert St. Suite 216  
 Oakland, CA 94607, USA  
 Toll Free: +1-877-264-4300  
 Fax: +1-510-865-0350  
 E-mail: order.usa@bioneer.us.com

**Bioneer R&D Center**  
 B-702, Korea Bio Park Bldg, 700,  
 Daewangpangyo-ro, Bundang-gu, Seongnam-si,  
 Gyeonggi-do, 463-400, Republic of Korea  
 Tel: +82-31-628-0500  
 Fax: +82-31-628-0555