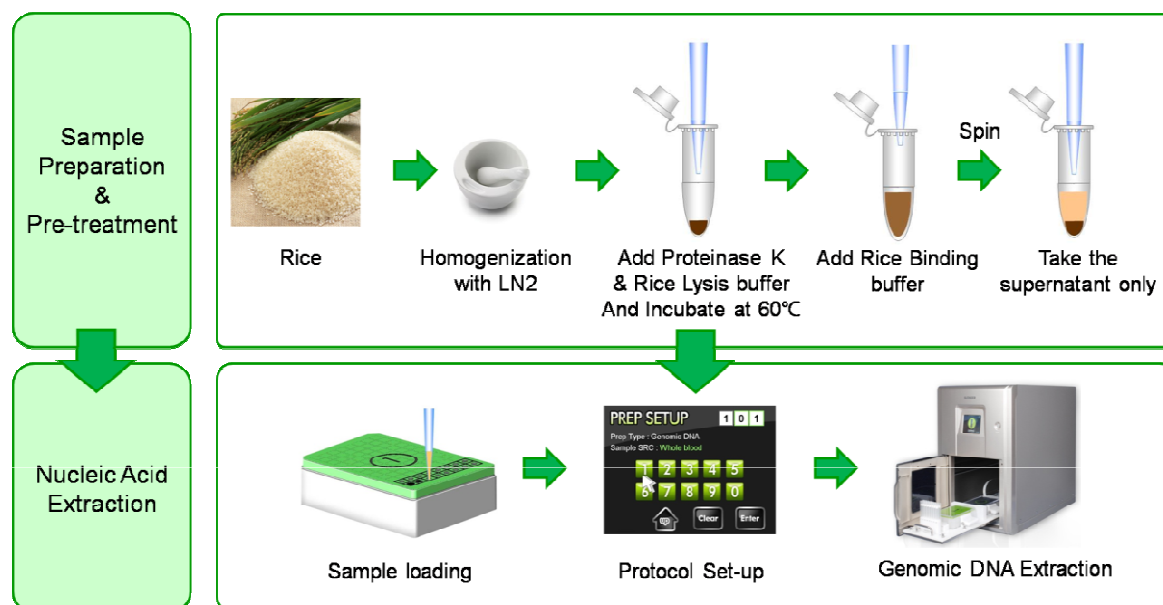


## 1. Materials

Kit	ExiPrep™ Rice Genomic DNA Kit
Instrument type	ExiPrep™16 Plus
Sample type	Rice
Sample amount	1 ea
Protocol ID number	106
Elution volume	50 µℓ

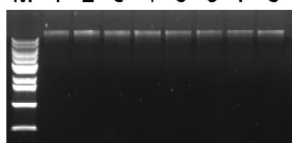
## 2. Experimental Procedure



## 3. Experimental Results

### - Agarose gel electrophoresis

M 1 2 3 4 5 6 7 8

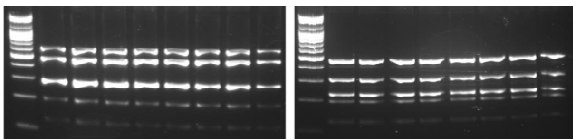


Agarose gel electrophoresis results of 100ng genomic DNA extracted from rice.

Lane M : size marker, Lane 1-8 : Extracted samples from rice  
Average yield is up to 1-2ug and purity(A260/A280) is over 1.8.

### - PCR results

M 1 2 3 4 5 6 7 8 M 1 2 3 4 5 6 7 8

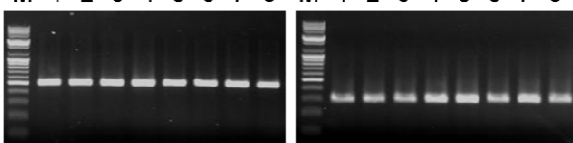


cv. samkwang

cv. wunkwang

Conventional PCR results using *MyGenie*™ 96/ 384 Gradient Thermal Block from genomic DNA extracted from 2 types of rice cultivar.

M 1 2 3 4 5 6 7 8 M 1 2 3 4 5 6 7 8



DK34 primer set

DK2401 primer set

Conventional PCR results using DK34 primer set and DK2401 primer set on *MyGenie*™ 96/ 384 Gradient Thermal Block from genomic DNA extracted from rice.