

Experimental Report

1. Sample type	Rice (Unkwang)
2. Target nucleic acid	Genomic DNA
3. Starting volume	17.5mg
4. Elution volume	50ul
5. Extraction kit	ExiPrep™ Rice Genomic DNA Kit (Cat. No. K-3200-CR)
6. Extraction method	ExiPrep™ 16 (Cat. No. A-5010)
7. Extraction protocol	Genomic DNA from Plant seed

8. Material & Method

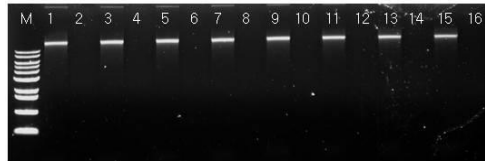
1	2	3	4	5	6	7	8
9	10	11	12	13	14	15	16

Green well; Rice lysate loading

Gray well; D.W loading

9. Experimental Results

i) Agarose gel electrophoresis



M; 2ul of 1kb DNA Ladder (Cat. No. D-1040)

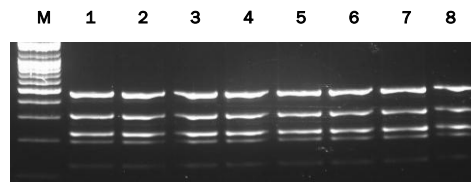
Lane 1~16; 5ul of extract

0.8% agarose gel, 150V 40 min

ii) Typical yield and purity

Sample	A _{260/280}	Conc.(ng/ul)	Yield(ug)
Rice	≥1.9	20 ~ 60	1 ~ 3

iii) PCR result



M; 2ul of 100bp DNA Ladder (Cat. No. D-1030)

Lane; 4ul of multiplex PCR product

Code marker; DK-117, DK1412, DK50, DK560, DK CCS

3% agarose gel, 100V 120 min

10. Discussions

The results confirmed that the 1 ~ 3ug genomic DNA purified from 17.5mg of rice lysate was consistently obtained.