

Experimental Report

1. Sample type	Rice (Samkwang)
2. Target nucleic acid	Genomic DNA
3. Starting volume	17.5mg
4. Elution volume	50ul
5. Extraction kit	ExiPrep™ Rice Genomic DNA Kit (Cat. No. K-3200-CR)
6. Extraction method	ExiPrep™ 16 (Cat. No. A-5010)
7. Extraction protocol	Genomic DNA from plant seed

8. Material & Method

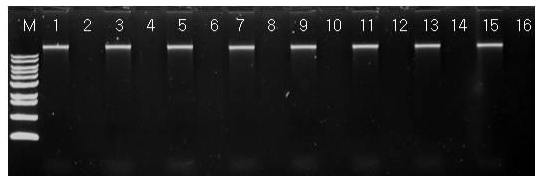
1	2	3	4	5	6	7	8
9	10	11	12	13	14	15	16

Green well (1, 3, 5, 7, 9, 11, 13, 15); Rice lysate

Gray well (2, 4, 6, 8, 10, 12, 14, 16); D.W

9. Experimental Results

i) Agarose gel electrophoresis



M; 2ul of 1kb DNA Ladder (Cat. No. D-1040)

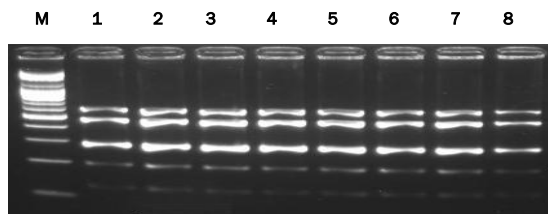
Lane 1~16; 5ul of eluent

0.8% agarose gel, 150V 40 min

ii) Typical yield and purity

Sample	A _{260/280}	Conc.(ng/ul)	Yield(ug)
Rice	≥1.9	20~60	1~3

iii) PCR result



M; 2ul of 100bp DNA Ladder (Cat. No. D-1030)

Lane 1 ~ 8; 4ul of multiplex PCR product

Code marker ; DK34, DK-117, DK2041, DK50, DK CCS

3% agarose gel, 100V 120 min

10. Discussions

The results confirmed that the 1 ~ 3ug genomic DNA purified from 17.5mg of rice lysate was consistently obtained.